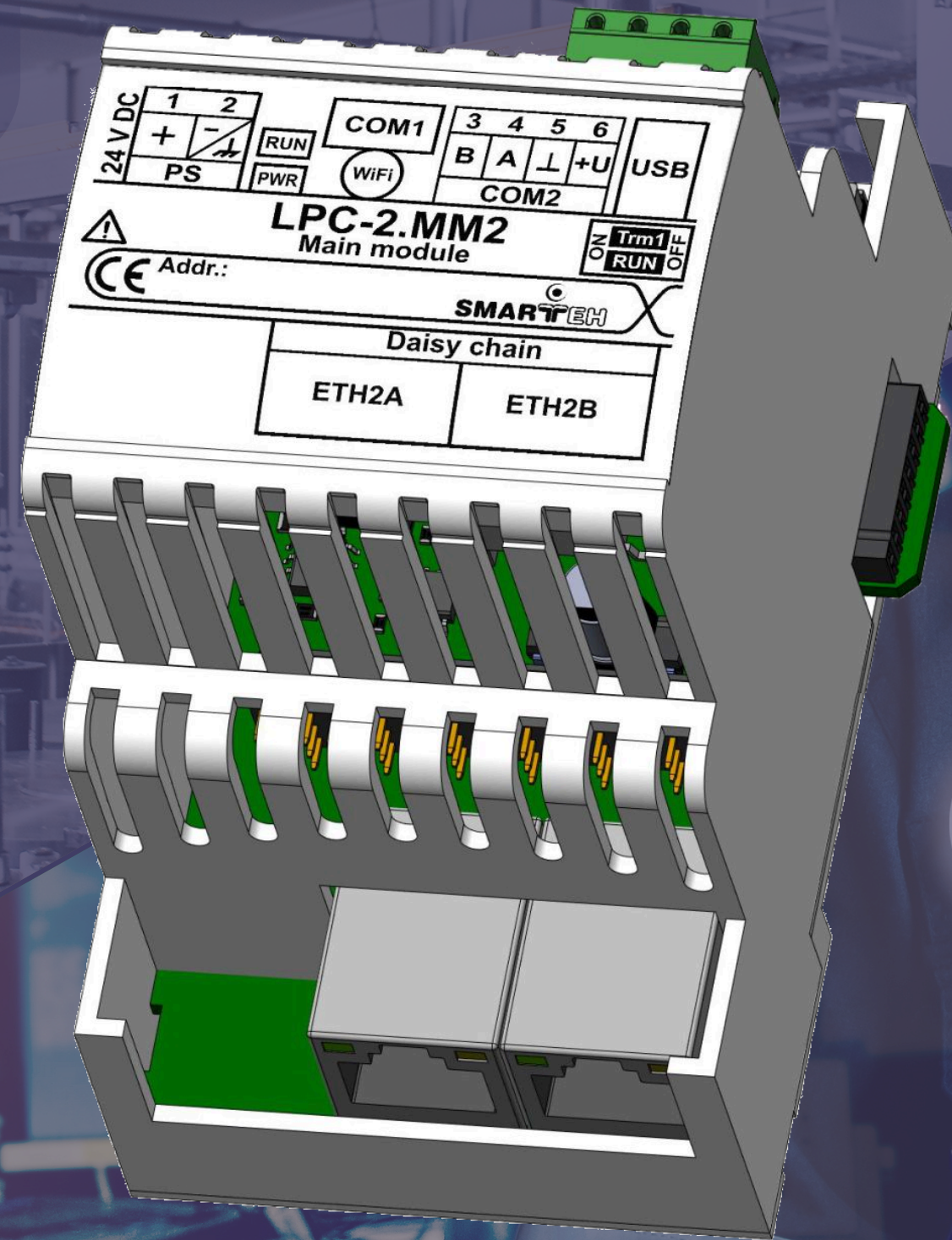


LPC-2.MM2

PLC main control module



WWW.SMARTEH.COM



USER MANUAL



LINKEDIN



YOUTUBE



SALES@SMARTEH.SI



+386 5 388 4400

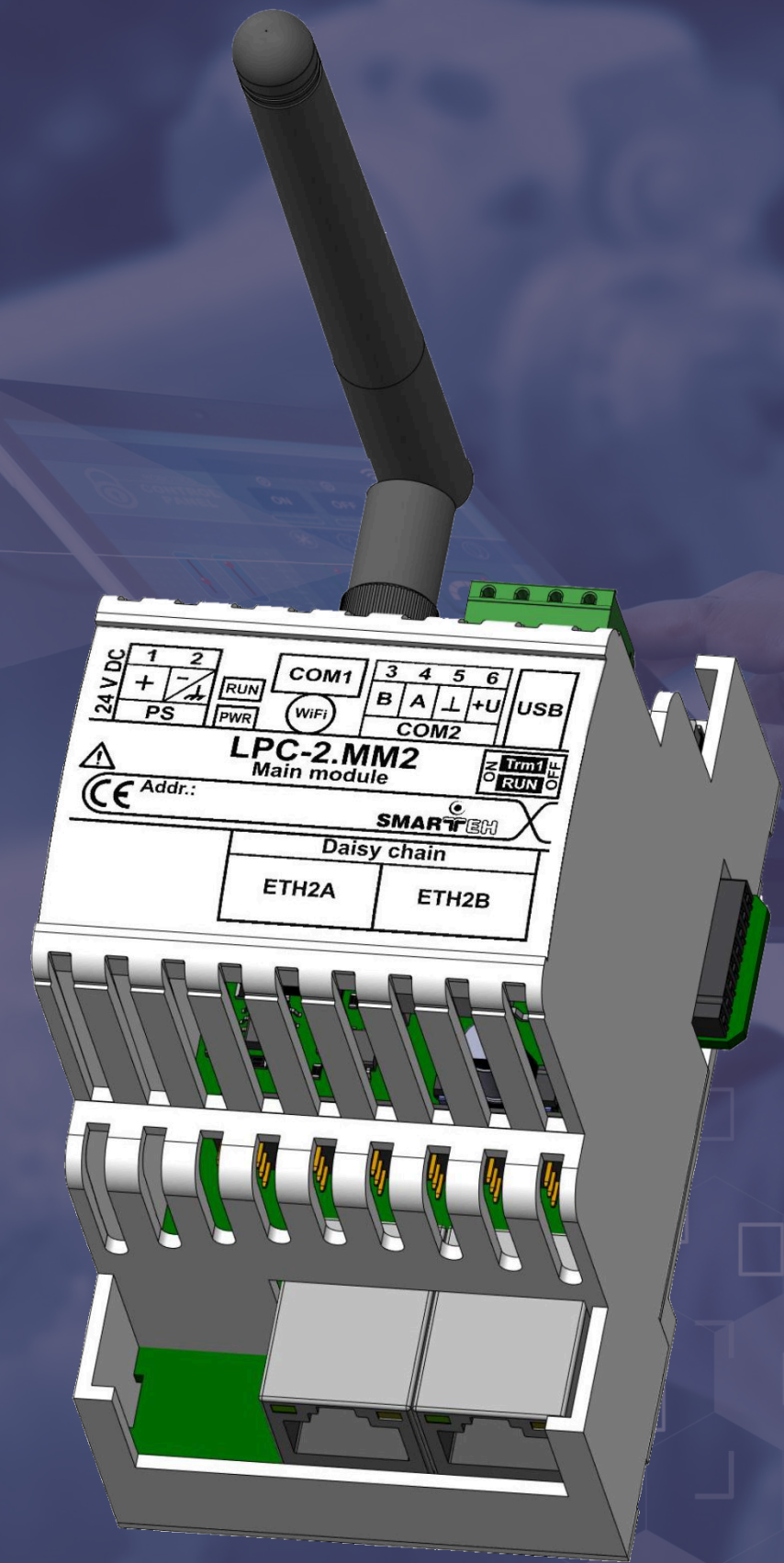
INTRODUCTION

Discover the revolutionary Smarteh LPC-2.MM2 PLC main control module that sets a new standard for performance, scalability, and versatility in building and industrial automation.

The LPC-2.MM2 features a compact, Arm-based System on Module (SoM) package, delivering enhanced computing power and control with a wide array of advanced features. Powered by an ARM architecture processor and a Linux-based OS, the LPC-2.MM2 is future-proof, enabling seamless interface connections and core SoM module upgrades without hardware changes. Effortlessly expand your capabilities by connecting additional input and output modules via an internal bus connector on the right side of the LPC-2.MM2.

Unleash seamless connectivity with Ethernet Daisy chain topology.

Experience the next evolution in networking with Ethernet Daisy Chain Topology—a revolutionary solution designed to simplify and streamline your network infrastructure like never before. The LPC-2.MM2 is a connectivity powerhouse, featuring two Ethernet Daisy chain ports with fail-safe functionality through an integrated switch for uninterrupted operation during power failures.



The WiFi antenna is not included in the scope of supply.



WWW.SMARTEH.COM



[USER MANUAL](#)



[LINKEDIN](#)



[YOUTUBE](#)



SALES@SMARTEH.SI



+386 5 388 4400

KEY FEATURES & BENEFITS

➤ Unmatched automation performance in a compact Arm-based SoM

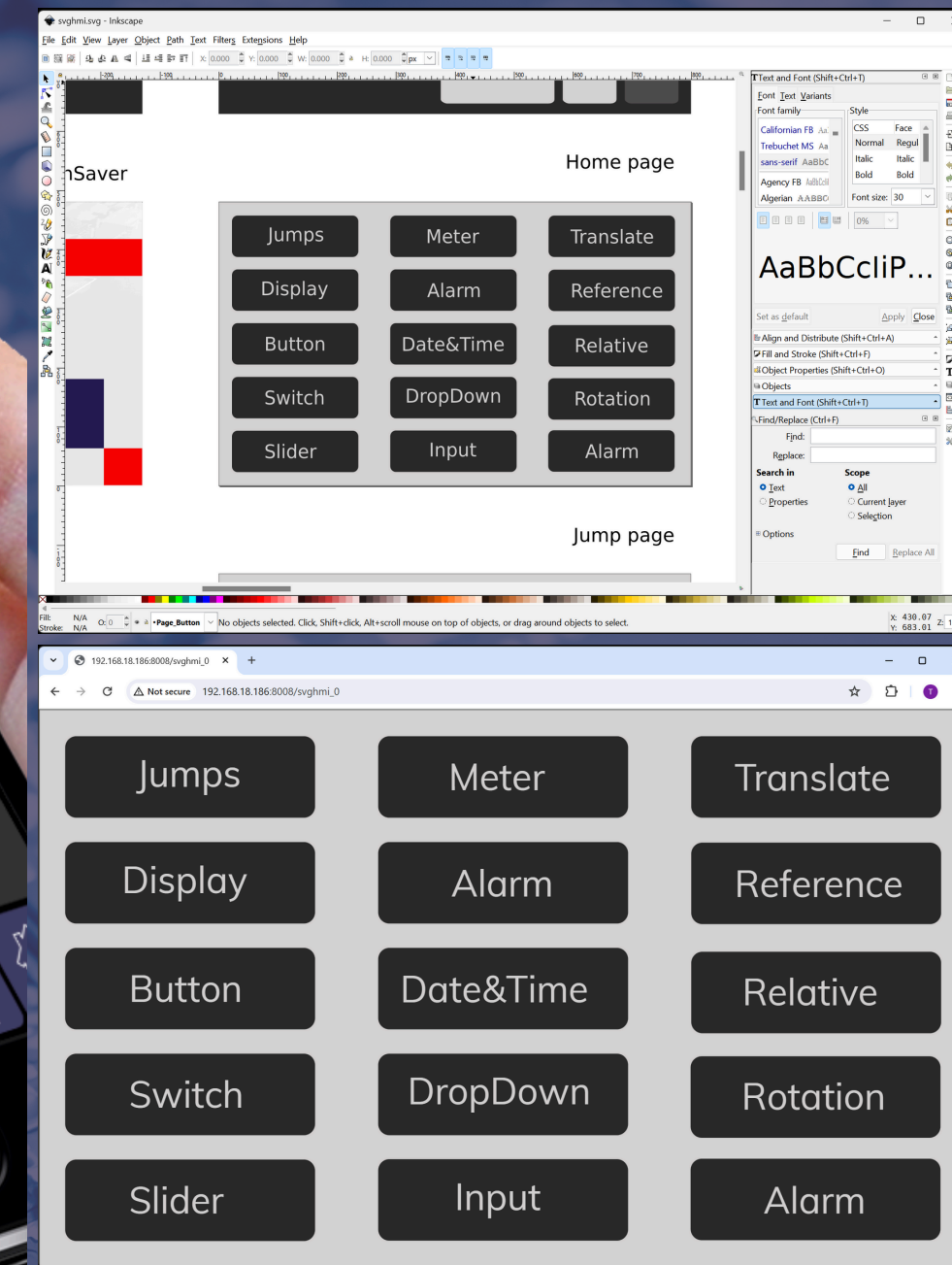
The LPC-2.MM2 PLC-based main control module is powered by an advanced i.MX6 Single (ARM® Cortex™ - A9) @ 1GHz CPU ensuring robust performance for a variety of automation tasks. With its high processing speed and efficiency, this SoM handles complex computations and real-time processing with ease.

➤ Discover Inkscape: A professional and open-source vector GUI editor

Experience the ultimate design freedom with Inkscape, the versatile open-source vector GUI editor that empowers you to create stunning graphical interfaces. Seamlessly integrated with Smarteh IDE, this powerful platform offers limitless possibilities and unmatched flexibility for UI design and PLC functionality. Say goodbye to costly licenses and fees, and embrace a world where your creativity knows no bounds.

➤ Connect remotely to a PLC in the field via a web browser

Access the LPC-2.MM2 PLC from any device through a web browser, utilizing a secure VPN connection or simplified Broadcast transmission.



WWW.SMARTEH.COM



[USER MANUAL](#)



[LINKEDIN](#)



[YOUTUBE](#)

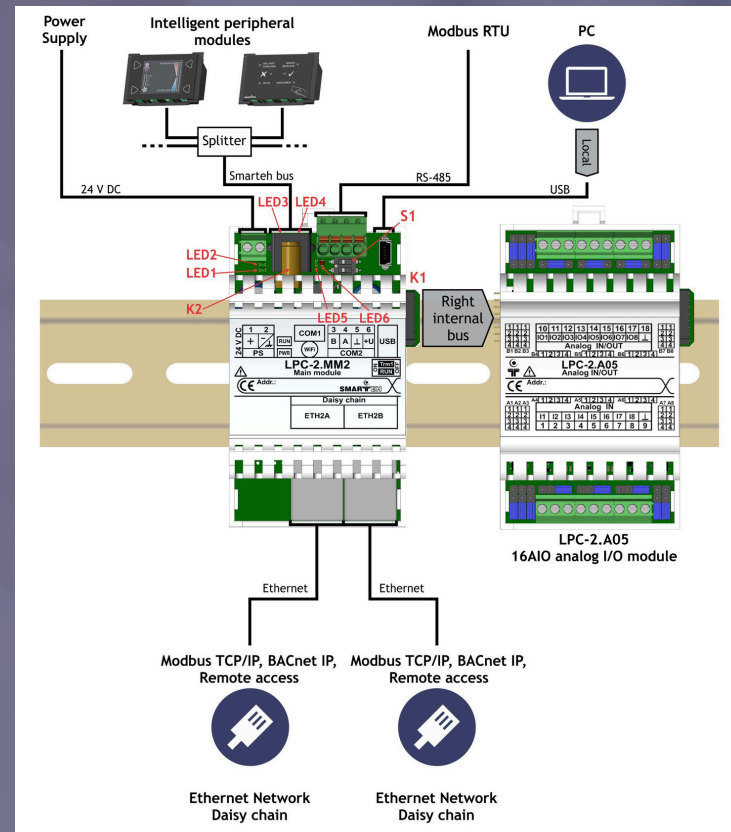
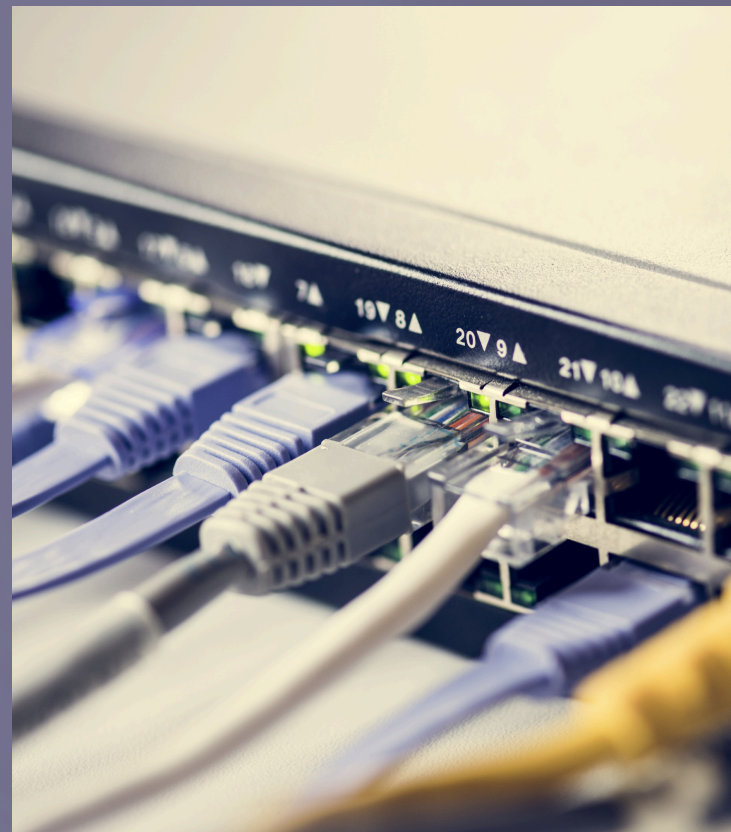


SALES@SMARTEH.SI



+386 5 388 4400

KEY FEATURES & BENEFITS



➤ Efficient and scalable connectivity

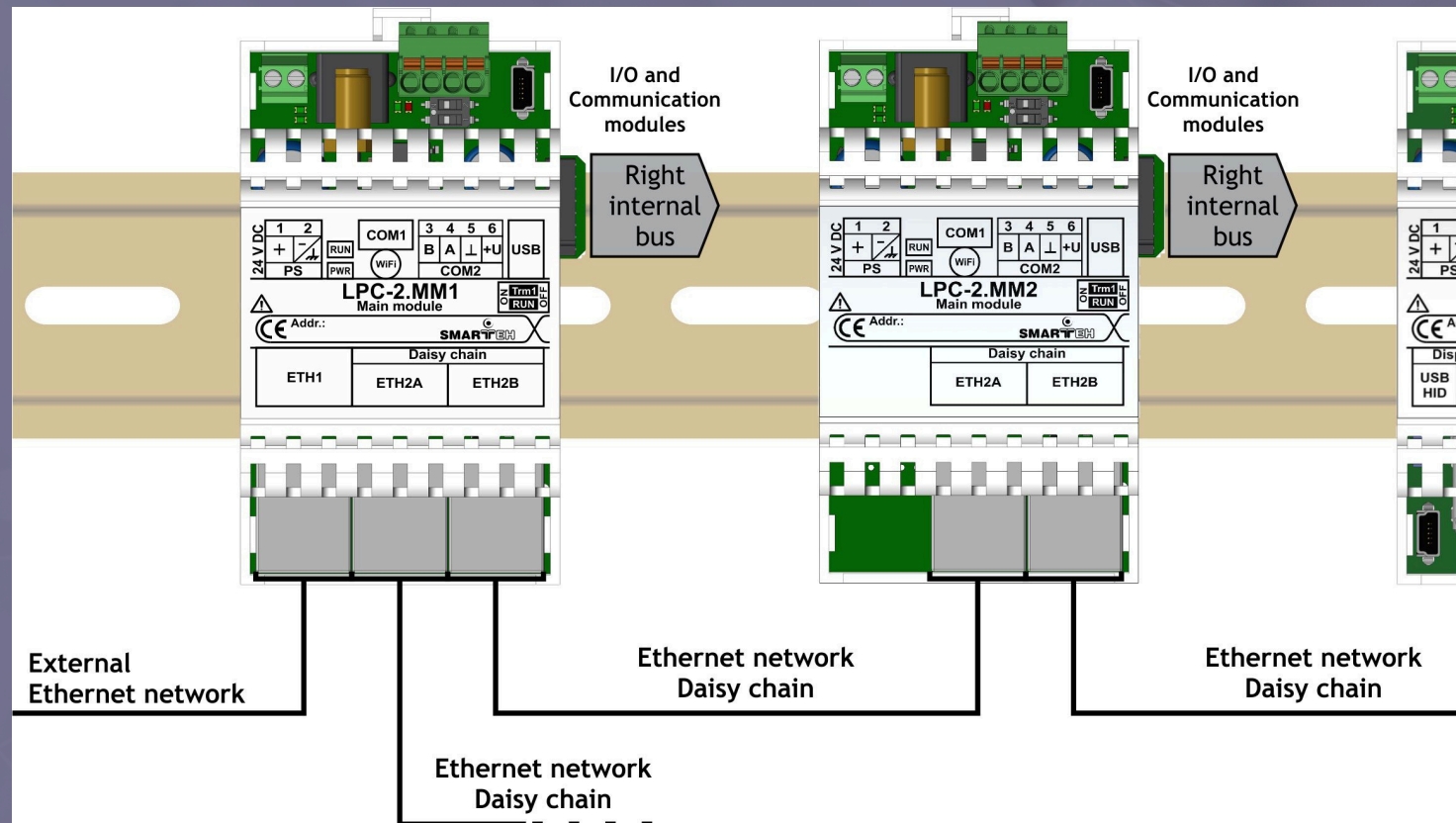
Ethernet daisy chain enables seamless communication between devices, minimizing latency, ensuring consistent signal strength, and allowing for easy network expansion, thus optimizing overall system performance and scalability. Designed with scalability in mind, the LPC-2.MM2 allows for easy expansion and integration as system requirements grow. Ideal for both small-scale projects and large industrial applications, providing flexibility and future-proofing your investment.

➤ Versatile connectivity

LPC-2.MM2 supports a wide range of connectivity options, including Ethernet connectivity with Modbus TCP/IP Slave (server) and/or Master (client) functionality, BACnet IP (B-ASC), web client with SSL support, Modbus RTU Master or Slave facilitating seamless integration into existing networks.

➤ Compact and robust design

The single compact LPC-2.MM2 main control module minimizes space requirements, making it perfect for applications with limited space. Built to withstand harsh industrial environments, ensuring reliable performance in challenging conditions.



WWW.SMARTEH.COM



[USER MANUAL](#)



[LINKEDIN](#)



[YOUTUBE](#)



SALES@SMARTEH.SI



+386 5 388 4400

KEY APPLICATIONS

➤ Building automation

Ideal for smart building solutions, HVAC systems, lighting control, and energy management. Enhances building efficiency, comfort, and security through intelligent automation.

➤ Industrial automation

Perfect for manufacturing, process control, and industrial IoT applications. Optimizes production processes, reduces downtime, and improves overall productivity.

➤ Smart infrastructure

Suitable for smart city projects, including traffic management, smart grids, and public safety systems. Supports real-time data analysis and decision-making, enhancing urban living standards.



WWW.SMARTEH.COM



USER MANUAL



LINKEDIN



YOUTUBE



SALES@SMARTEH.SI



+386 5 388 4400

GENERAL

The infographic features a central white circle with the word 'GENERAL' in bold blue text. Five red lines radiate from this circle to five white rounded rectangular boxes, each containing a red circle with a white number (1-5) and a white box with black and red text. The background is a blurred image of a green printed circuit board (PCB) with various electronic components like chips, capacitors, and connectors.

1

CPU

i.MX6 Single (ARM® Cortex™-A9)
@ 1GHz

2

RAM

1 GB DDR3

3

NON-VOLATILE MEMORY

512 kB, capacitor backed up
with retention cca. 14 days

4

FLASH

4 GB eMMC 8bits (MLC type)

5

OPERATING SYSTEM

Linux

COMM. PORTS

1

ETHERNET

2x RJ-45, 10/100T IEEE 802.3

2

CONN. FOR EXT. ANTENNA

IEEE 802.11 b/g/n, SMA female connector

3

COM PORT

1x Smarteh bus, RS-485
1x Modbus RTU, RS-485

4

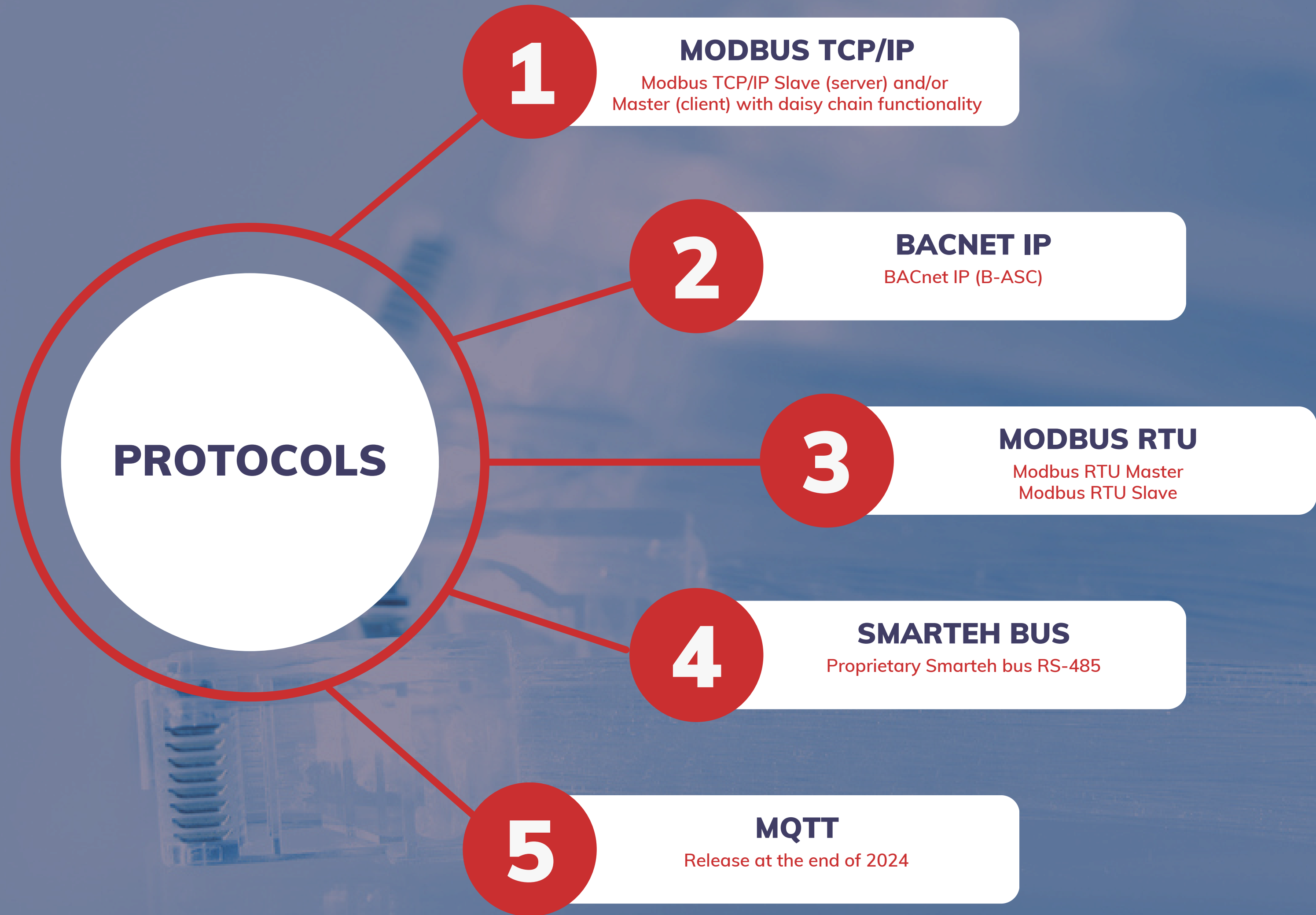
USB HOST

1x mini B type, device mode or host mode
(USB On-TheGo), high-speed/full-speed

5

RIGHT INTERNAL BUS

For connection to Smarteh I/O and
Communication modules



SPECIFICATIONS

1

POWER CONSUMPTION

Up to 24 W depending on additional modules connected to main module

2

POWER SUPPLY

Rated 24 V DC, 2A
Operational 20 .. 28 V DC

3

TEMPERATURE

Operating 0° ~ 50°C (32° ~ 122°F)
Ambient -20° ~ 60°C (-4° ~ 140°F)

4

MOUNT

DIN EN50022-35 rail mounting

5

ENCLOSURE

Nilit Nilamid B G6 FR C4 30% Glass Fiber Reinforced, Flame Retardant PA6 + MB7035



SMARTTEH

SMARTTEH d.o.o.
Poljubinj 114, 5220 Tolmin, Slovenia
tel.: + 386(0)5 388 44 00
fax.: + 386(0)5 388 44 01
sales@smarteht.si
www.smarteht.com